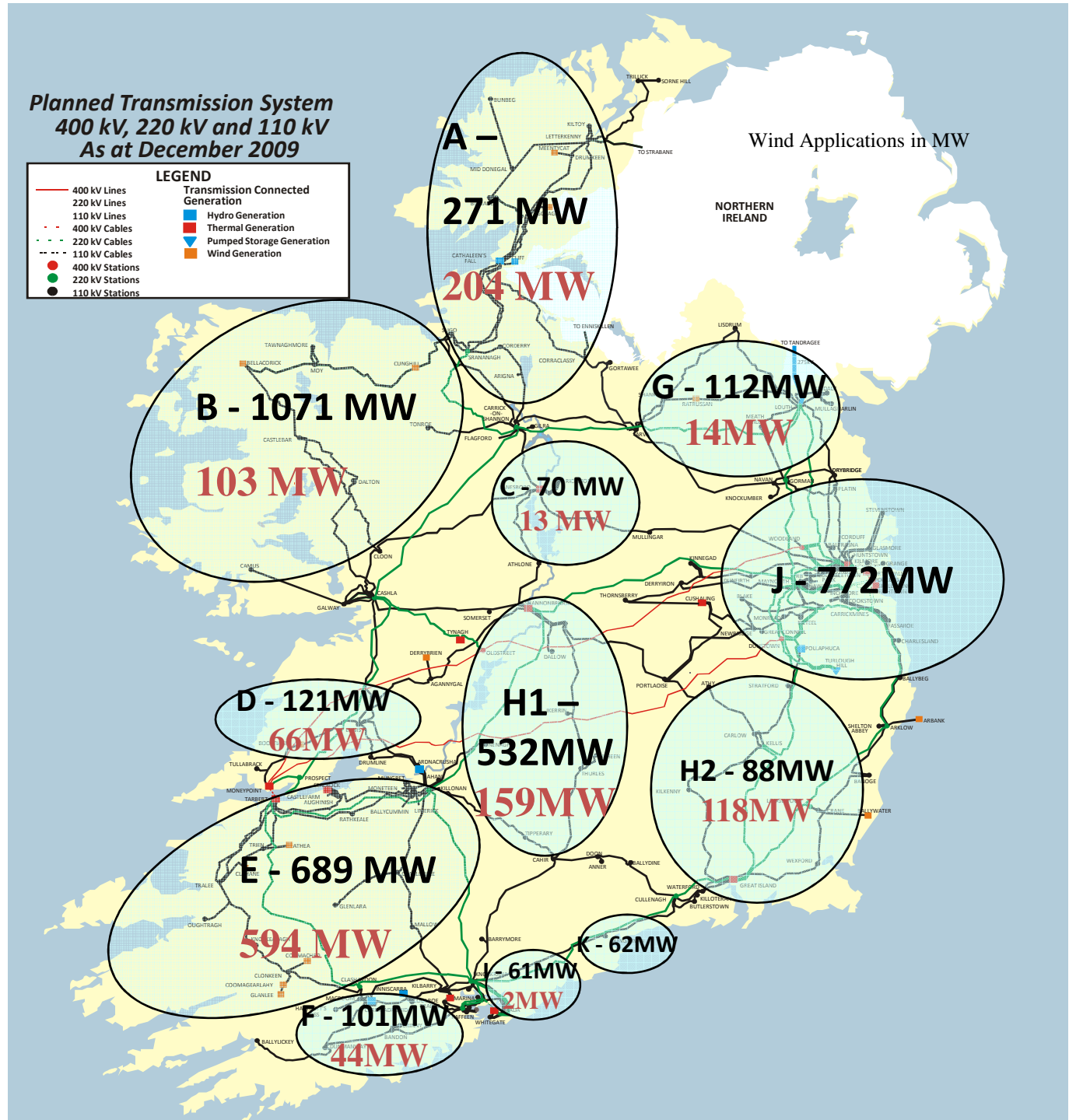


Gate 3 ≈ 4000 MW  
 Gate 2 ≈ 1300 MW

Also conventional



# Non GPA - Summary of Direction CER/09/099

Renewable - Wind	Renewable – Non Wind*		Conventional Projects	
All processed through GPA Process.  <b>Exception:</b> new build wind projects with MEC less than or equal to 0.5 MW	Processed through non GPA Process – must fulfil public interest criteria.		Processed through non GPA Process	Offers issued under the proposed Direction on Conventional Offer Issuance Criteria <sup>6</sup>
	= < 5 MW	>5 MW	= < 5 MW	> 5MW
	Connection offers made without performing interaction** studies	Interaction studies are performed.  If no interactions then connect  If interactions exist then CER look at on a case-by-case basis  If interactions exist then look at public interest benefits (e.g. Security of Supply) and the impacts of interaction on other applicant in the queue  If CER approves then connect and if not approve then option to buy out interaction or remain in the GPA queue	Interaction studies are performed  If no interactions are found to exist then they can proceed to be given a connection offer  If interactions exist then the conventional project will remain in the queue	<b>Exception:</b> Conventional autoproducers that are <u>not</u> in first 500MW tranche. These could be processed through the non GPA process  Process allows for public interest criteria (e.g. Security of Supply) to move up the queue projects such as clean coal and includes high efficiency CHP.

\* Non Wind Renewable project is defined here as a renewable project that has a fuel source other than wind power. It is intended to be a short hand term to define those renewable projects other than wind renewable projects that are discussed in the document. Includes, biomass, hydro, high efficiency CHP, Autoproducers (renewable including wind)

\*\* Interactions - two applications are deemed to be interacting if progressing an application outside the GPA, results in an additional cost being incurred by other applicants in the GPA queue. Interaction studies relate to the shallow connection.

# Connection Options

- Non wind renewable projects with an MEC above 5 MW will be processed with interaction studies. If no interactions are found to exist then they can proceed to be given a connection offer. If interactions do exist then the Commission will consider these on a case-by-case basis. The Commission will consider if the project has overwhelming public interest benefits and the degree of disadvantage that connecting the project could cause to other applicants ahead of it in the queue.
- If the Commission does not consider that the project's public benefit does not outweigh the adverse impact then the applicant will be given the option of buying out the interaction caused in order to be able to connect. Should the applicant consider that the cost of buying out the interaction is not economically viable then the applicant has the option of remaining in the queue.

# Public Interest Criteria

The CER has decided that the public interest criteria can be summarised as follows –

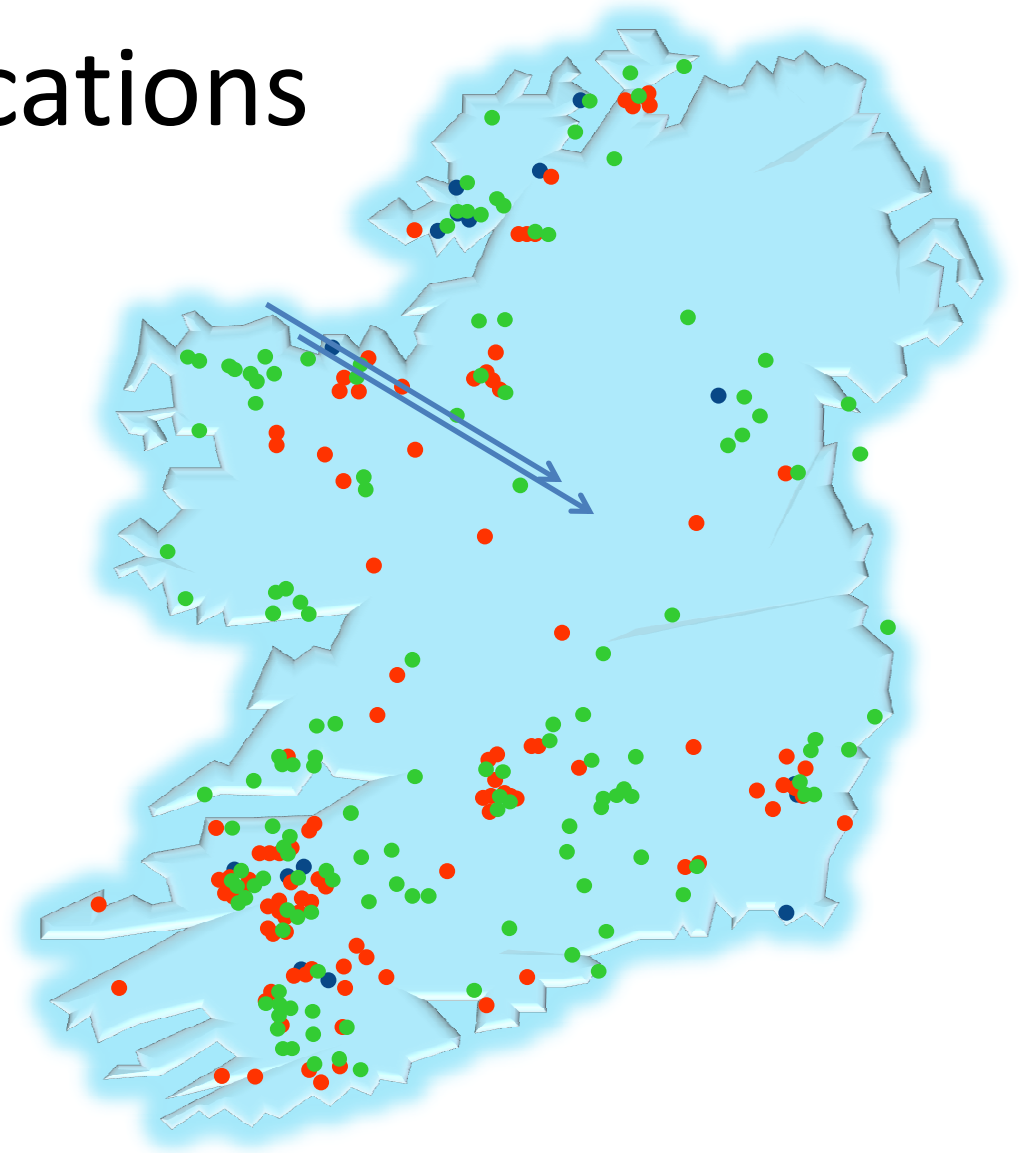
- Diversity of Fuel Mix
- Predictability and power system support
- Environmental benefits
- Experimental/research

# Wind farm locations

Gate1: Blue

Gate2: Red

Gate 3: Green



# Transmission Nodes in Clare and Limerick



Row Labels	DSO	TSO	Total
Clare	121.419		121.419
Booltiagh	101.62		101.62
Boolynagleragh	36.98		36.98
Boolynagleragh	11.64		11.64
Cahermurhpy	6		6
Garvoghil	6		6
Glenmore	30		30
Kiltumper	5		5
Lissycasey	6		6
Ennis	1.399		1.399
Toonagh	1.399		1.399
Tullabrack	18.4		18.4
Carrownaweelaun	4.6		4.6
Tullabrack	13.8		13.8
Limerick	107.04	127	234.04
Athea	77.6	26	103.6
Athea (3+4)		26	26
Knockathea WF Upper Athea	33.9		33.9
Knocknagornagh	43.7		43.7
Aughinish	20		20
Askeaton	20		20
Cahernagh		101	101
Cahernagh Mid Merit		101	101
Rathkeale	0.44		0.44
McDonnell Farms	0.44		0.44
Trien	9		9
Ballagh 1	9		9
<b>Total</b>	<b>228.459</b>	<b>127</b>	<b>355.459</b>

## Gate 3 Applicants in Clare and Limerick

# Approved Projects – Limerick Clare

Uprate Ennis – Cashla 110kV

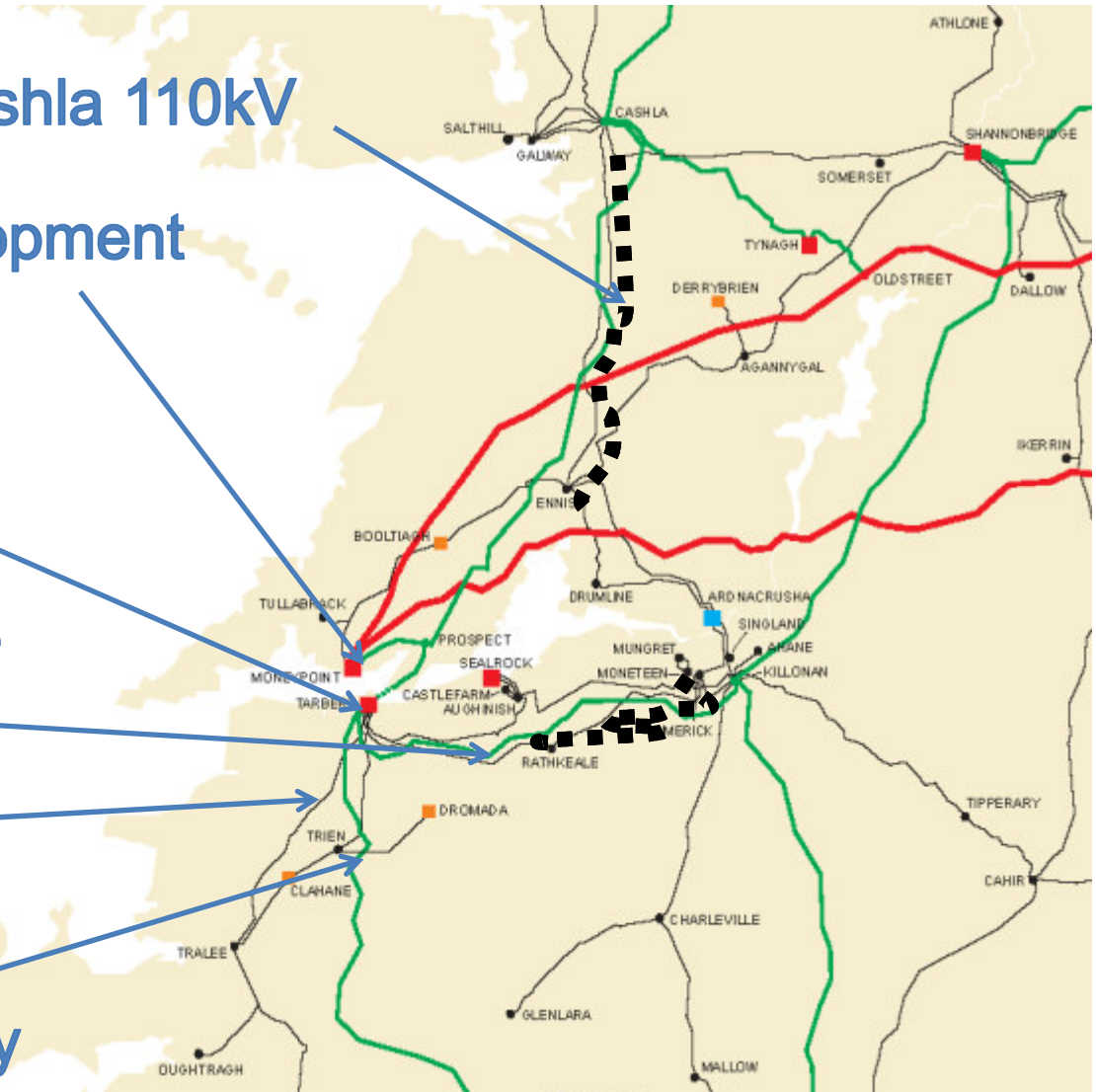
Moneypoint Redevelopment  
400/220/110 kV

Tarbert Redevelopment  
400/220/110 kV

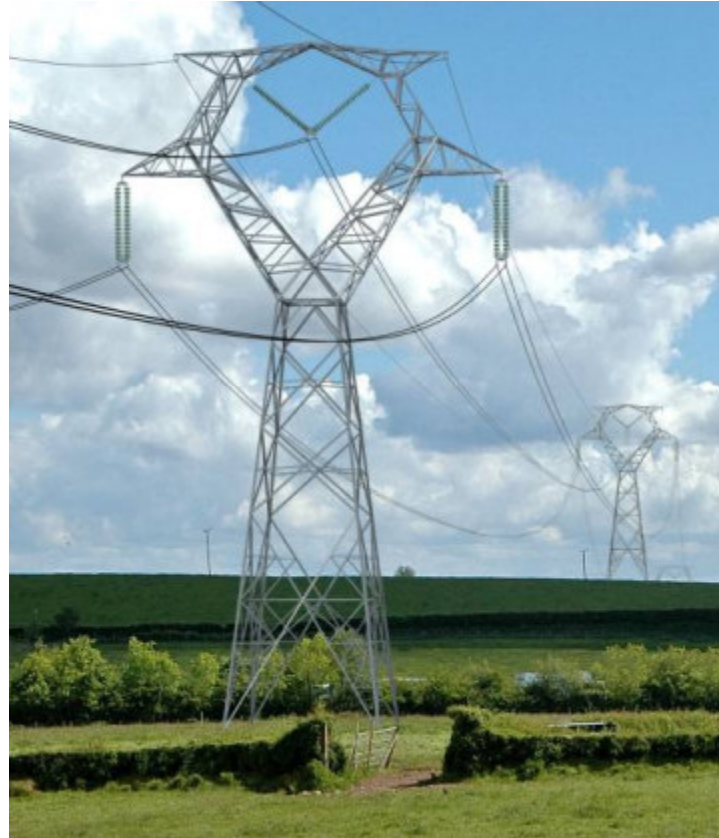
Uprate Limerick Rathkeale  
110kV

Moneypoint –  
North Kerry

North Kerry  
220/110 kV



# Challenge



# Public Acceptability



# 400kV Projects

## Pylon protesters hit out at EirGrid 'harassment'

By Evan Short  
Senior Rep

them to stop doing this and that  
landowners should be visited only  
engineer, said: "EirGrid has written  
to landowners letting them know

The North  
campaign  
in the North  
concerned  
by agents  
properties  
The land  
a letter for  
landowner  
agents who  
discuss pl  
head elect  
property.  
A spoke  
"Concern  
properties  
prior noti  
derstand  
people live  
"We've u

## Anti-pylon campaign

going momentum

# BATTLE TO HALT EIRGRID

# OVERHEAD POWER-LINES

By PATSY McARDLE

MEMBERS of the North East Pylon Pressure campaign (NEPP) will meet the Minister for Energy, Mr. Eamon Ryan TD, and the Chief Executive of EirGrid, Mr. Dermot Byrne in Dublin tomorrow (Friday) at

undergrounding issue, we are currently finalising our own site specific report and will publish it within the next number of weeks."

"Our panel of international experts, with more than 40 years experience, have reviewed Askon's report and feel there are

## NEPP accuses EirGrid of "lies and distortions"

"HAVING lost the public debate about technical feasibility and affordability of underground cables compared with giant pylons and overhead wires, EirGrid has decided to resort to downright lies and

plan is that major sections of it will be laid underground, in order to return areas of open countryside to their natural and unspoilt aspect. The government has not made DKK 14.5 billion (€ 1.95 billion) to

U1  
ca  
€5

BARRY

USING  
for a  
electric  
Tyrone

more than putting them overhead, a new report says.

National grid operator Eirgrid plans to build a 70km high-voltage electricity connector through Meath, Cavan, Monaghan, Armagh and Tyrone over the next three years.

It will be part of the national grid, the core of the electricity distribution network. Local people want the State agency to run the power lines underground for

the technology was re new.

According to Mr Winfie options will affect environment.

Laying underground would involve a level of dis similar to building a mo although it would be sho Along with this, excavation hit archaeological sites.

Overhead lines would be digging foundations every

## favours under

POWER COMPANY EirGrid has questioned the findings of a consultants' report recommending that overhead transmission lines proposed for counties Meath, Cavan and Monaghan be run underground

The company said last week that the report - prepared by German based Akron Consulting - was based on incorrect assumptions about the Irish electricity grid, and the conclusions were therefore flawed.

The study was commissioned by the North East Pylon Pressure Group, which is opposed to overhead lines, and was first released last October.

An EirGrid spokeswoman said last week that the company had not

Local Fine Gael deputy Seymour Crawford congratulated the NEPP on getting together the funds and expertise to commission the study, which, he said, added a lot to the discussion of the differences between the options and the possibility of putting cables underground.

## Pylon protesters get their meeting with energy minister

BY IAN CAMERON

MEMBERS OF the North East Pylon Pressure campaign (NEPP) will meet the Minister for Energy, Eamon Ryan TD, and the Chief Executive of EirGrid, Dermot Byrne, in Dublin

pendent advice from international experts that backs our case that underground cables are cheaper, safer, more reliable and more environmentally friendly. "We want Eamon Ryan and EirGrid to listen

Group on Health Effects of Electro Magnetic Fields, has been gathering dust on the desk of Energy Minister Eamon Ryan TD since it was given to his department more than a year ago.

"The group involved leading

dergrounding would soon be released. The report is being compiled by experts with more than 40 years experience and they have found "fundamental errors" in the NEPP's report on the merits of undergrounding power lines.



*Limerick Clare Energy Agency Presentation*  
*Aidan Corcoran, Manager Grid25 Programme*  
*February 24<sup>th</sup> 2011*